



THE MAKING CENTER

CASTING GUIDE

APPROVED MATERIALS

Bio Based Casting and Coating Epoxy

Entropy Resin SAP CCR

Two Part Epoxies

West System Epoxy

Z-Max

Casting Plastics

Smooth-On 300 Series

Smooth-On 320 Series

Casting and Mold Rubbers

Smooth-On Dragon Skin

Smooth-On Encapso K

Smooth-On Mold Star

Smooth-On OOMOO

Smooth-On Brush On

Casting Foams

Smooth-On Flex Foam-it

Smooth-On Foam-it

For safety reasons and precautions, no other products or materials are allowed without direct approval from the shop manager.

Please refer to the resources page for the most up to date list.

Last updated 3/30/2020

REQUIRED PPE

All of this PPE must be worn at all times before the casting room will be unlocked.

Provided by the shop:

Nitrile Gloves

Goggles

Must be purchased by person using the space:

Tyvek suit

Respirator with proper cartridges



STORAGE

This storage unit will be cleared out at the end of every semester.

Shelving

Projects can be stored on the shelf for up to one week.

A slip must be filled out and signed by a Technician. The slips can be found on the shelf.

If there is no signature the project will be thrown away.

Fire Cabinet

Projects can be stored in the fire cabinets for one semester.

Please label your material with your name & date.

Report your material to the Technician to be added to our hazard material list.

If there is no label it will be added to the free use pile or thrown away.



EQUIPMENT

Vacuum Chamber

This is used to degas your silicon mold. It can also be used to remove bubbles from your resin before pouring.

Pressure Pot

This is used to degas your resin. This removes gas and creates a clearer and more detailed cast.

Scale

Digital scale for weighing out materials by weight. If you want to measure your material by Volume you must bring your own measuring container.



HOW TO USE PRESSURE POT

Open the pot

Unscrew all of the thumbscrews enough that the flanges can be flipped off.



Cast your material

Mix and cast your material and set it the mold into the pot.

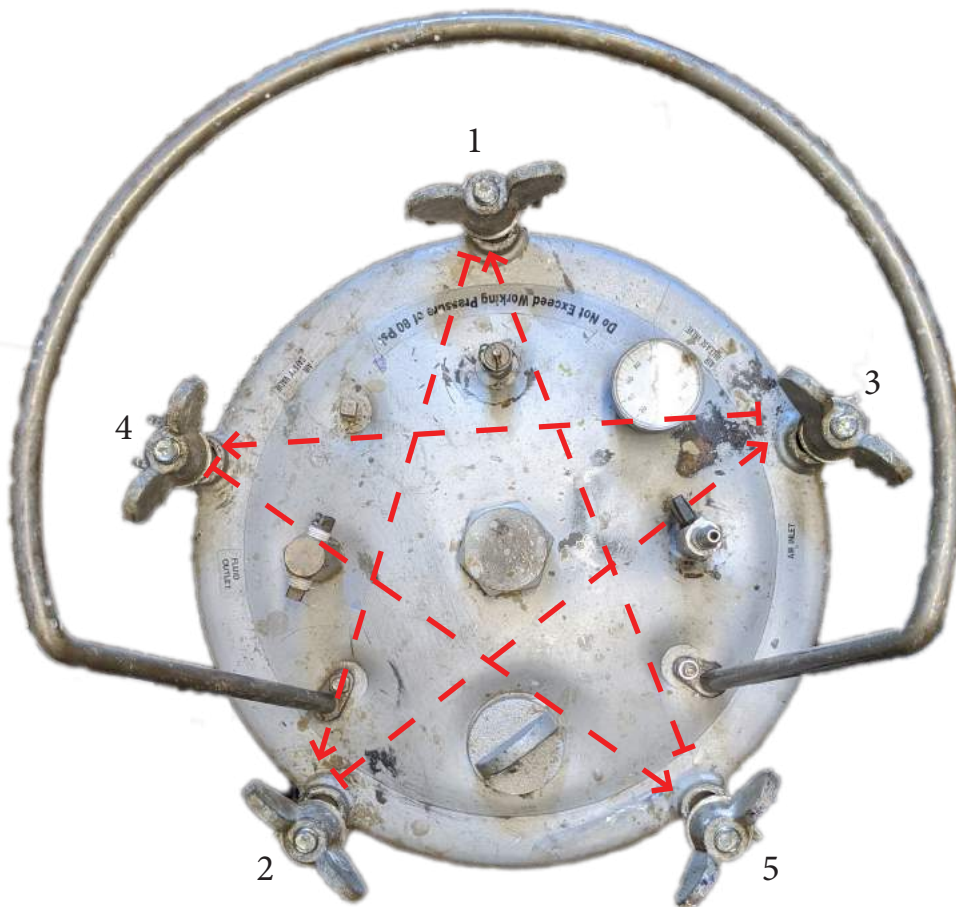
It is best to move quickly if you have a fast setting material.

You should also check to make sure your mold is level before mixing your material and casting.

Attach the lid

Place the lid on the pot and align the slots to the thumb screws.

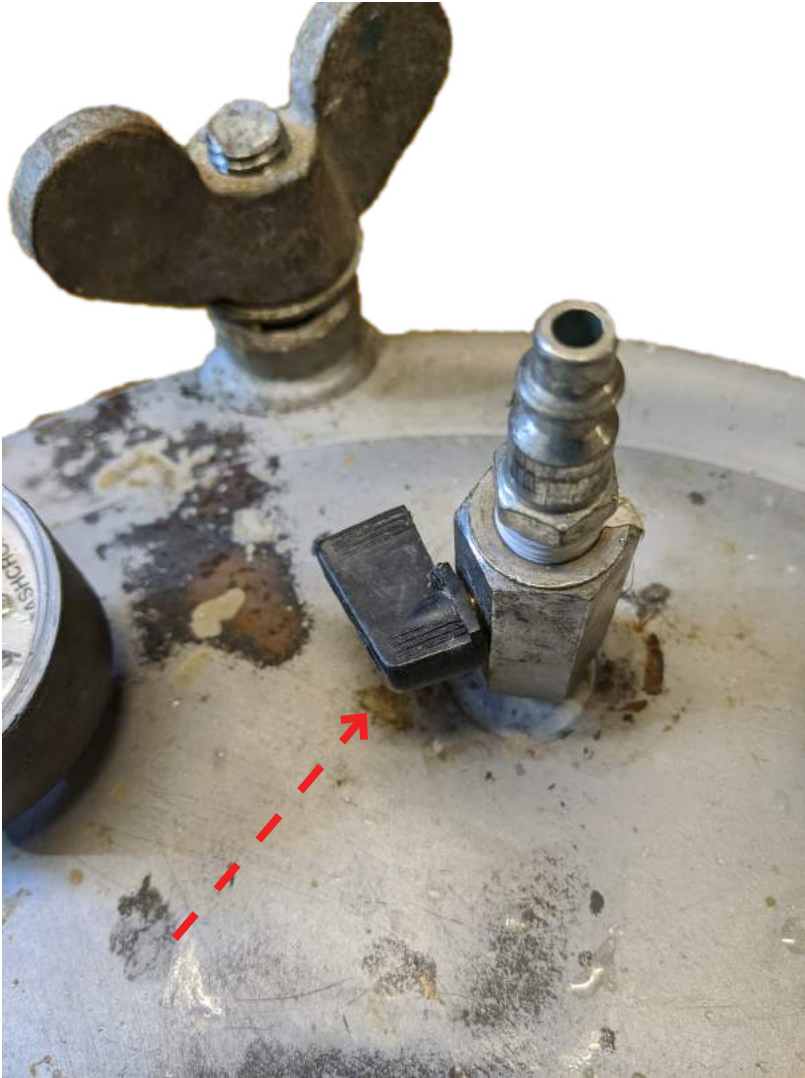
Tighten each one following the pattern. Tighten only finger tight for each pass.



Attach the Air Hose

Find the NPT connector and make sure the black lever is perpendicular to the valve.

As soon in the photo.



After the hose is connected, turn the black lever slowly until it is parallel with the hose.



Make sure the in-line regulator does not go past 65 PSI.

Leave the hose connected while the cast cures.

