

**READ ME
TO PRINT**

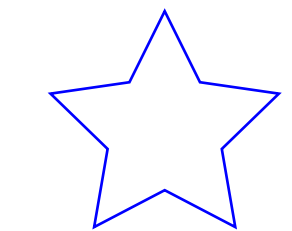
BEFORE YOU START:

1. THE EPILOG LASER ONLY PRINTS FILES FROM ILLUSTRATOR, IF YOUR FILES ARE ON AUTO CAD OR RHINO PLEASE CONVERT THEM TO ILLUSTRATOR FILES

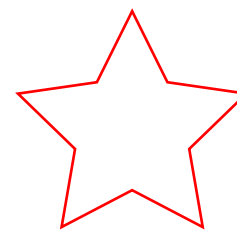
2. IF YOU INTEND TO ENGARVE ON METALS, DO NOT CONTINUE UNTIL YOU SPEAK TO A TECH

PREPARING YOUR FILE (ILLUSTRATOR)

1. Make sure your color mode is set to **RGB**
(File > Document Color Mode > RGB Color)
2. Set 'Stroke Color' to the correct settings
(0, 0, 255 - Blue)
(255, 0, 0 - Red)
(0, 0, 0 - Black)
3. Set 'Stroke Weight' to '0.001pt'
4. Set 'Brush Definition' to 'Basic'
5. Set 'Variable Width Profile' to 'Uniform'
6. If you have text in the file, select it, select **Type > Create Outlines**



Vector Cutting



Vector Engraving



Raster Engraving

“Lorem ipsum”



SETTING UP THE MACHINE

1. Turn on the compressor
2. **Remove** any extra paper/coating on your material
3. Place your material on the bed
4. Place the focus tool on the laser head (see pic)
5. Scroll to '**Focus**' on the Control Panel by pressing the up or down buttons
6. **Focus the laser** on the material by moving the bed up or down using the joystick
7. The laser is focused when the material and the focus tool are **touching**
8. **Place** the focus tool back to its original spot

1



2



4



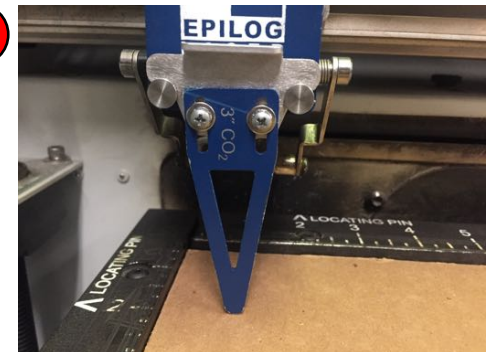
5



6

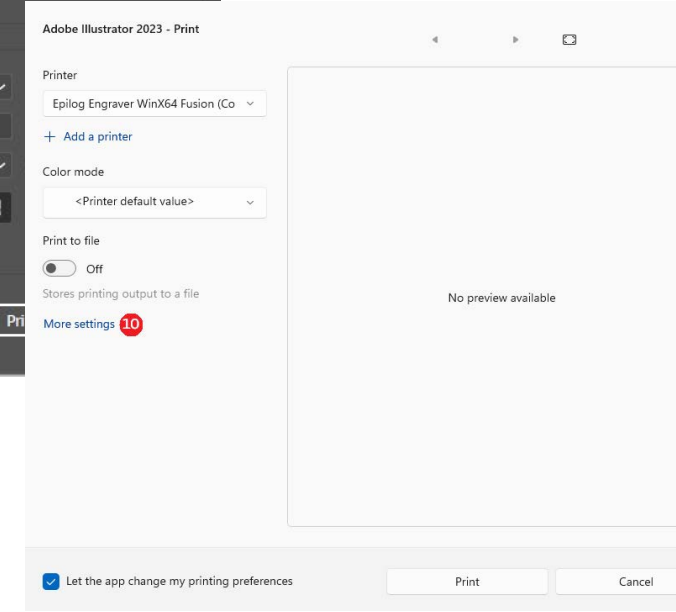
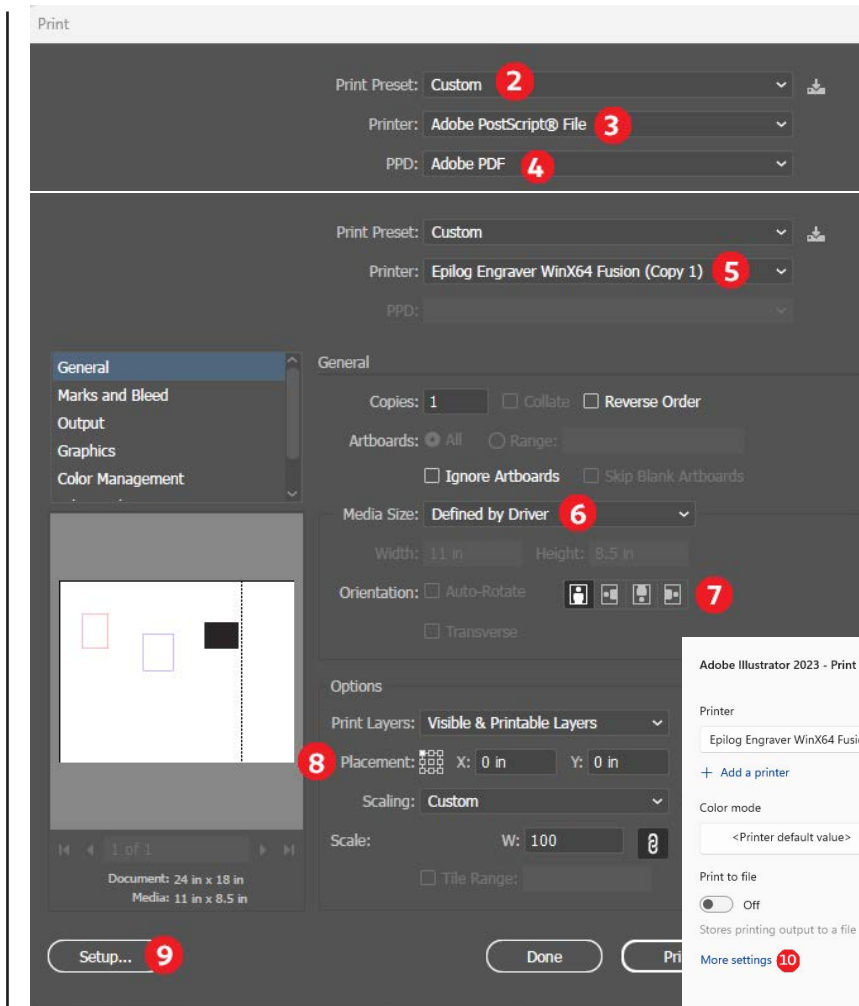


7



SENDING TO THE PRINTER (ILLUSTRATOR)

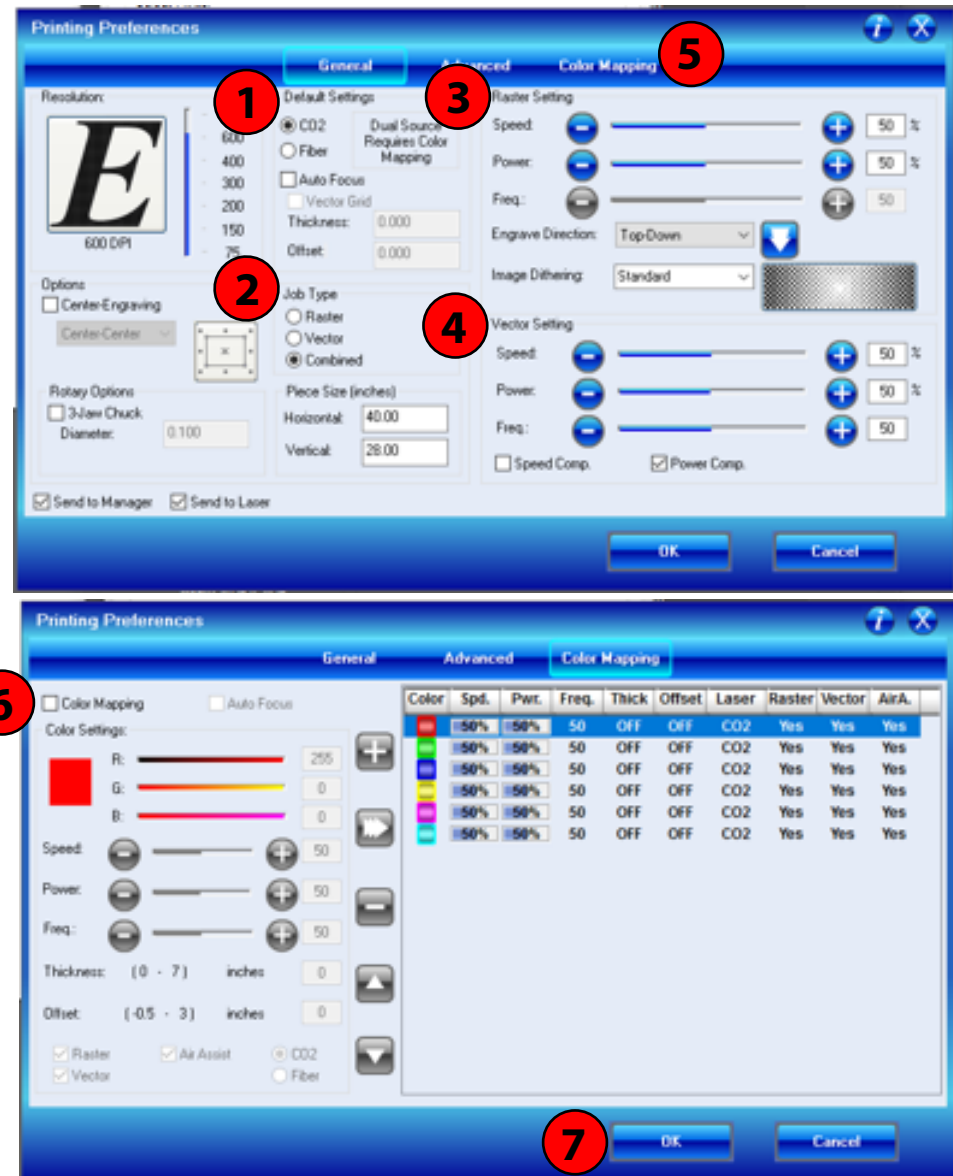
1. Go to **'File > Print'**
2. Set 'Print Preset' to **'Custom'**
3. Set 'Printer' to **'Adobe Postscript® File'**
4. Set 'PPD' to **'Adobe PDF'** - this will allow the file to appear in the preview box
5. Set 'Printer' **back** to **'Epilog Engraver Winx64 Fusion (Copy 1)'**
6. Set 'Media Size' to **'Defined by Driver'**
7. Choose your **Orientation**
8. Set 'Placement' to the Top Left Corner
9. Select **'Set Up'**
10. Make sure **'Epilog Engraver WinX64 Fusion Copy 1'** is selected and go to **'More Settings'**



PRINTER PREFERENCES 1/3


USE THESE SETTINGS IF YOUR FILE CONTAINS:
JUST **BLUE** ('Vector')
JUST **RED** ('Vector')
JUST **BLACK** ('Raster')
BLACK AND BLUE ('Combined')
BLACK AND RED ('Combined')

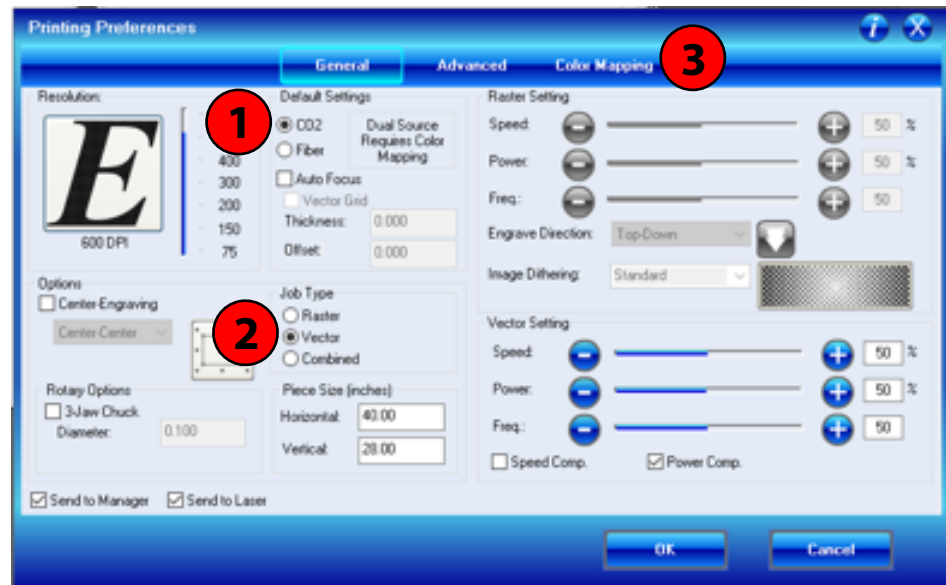
1. Select 'CO2'
2. Select the correct 'Job Type' ('Raster', 'Vector', or 'Combined') according to what your file contains (see list above)
3. Select your **Raster settings** according to the wall poster
4. Select your **Vector settings** according to the wall poster
5. Select 'Color Mapping'
6. Make sure the 'Color Mapping' toggle box is **not selected**
7. Select 'OK' >>> 'Print' >>> 'Print'



PRINTER PREFERENCES 2/3


USE THESE SETTINGS IF YOUR
FILE CONTAINS:
BLUE AND **RED**

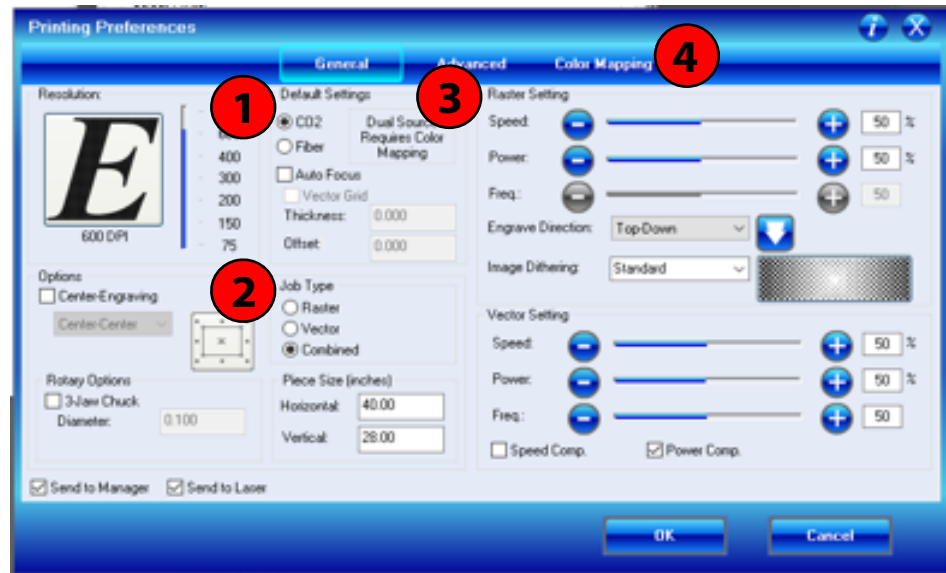
1. Select 'CO2'
2. Select 'Vector'
3. Select 'Color Mapping'
4. Make sure the 'Color Mapping' toggle box **is selected**
5. Select the red color box, highlighting the red settings.
6. Select your **speed, power, and frequency** settings according to the wall poster
7. Click the **Confirm** button 
8. Repeat steps 5-7 for the blue color settings
9. Select 'OK' >>> 'Print' >>> 'Print'



PRINTER PREFERENCES 3/3

USE THESE SETTINGS IF YOUR
FILE CONTAINS:
BLUE, BLACK, AND RED

1. Select 'CO2'
2. Select 'Combined'
3. Select your **Raster settings** according to the wall poster
4. Select 'Color Mapping'
5. Make sure the 'Color Mapping' toggle box is **selected**
6. Select the red color box, highlighting the red settings
7. Select your **speed, power, and frequency** settings according to the wall poster
8. Click the **Confirm** button 
9. Repeat steps 6-8 for the blue color settings
10. Select 'OK' >>> 'Print' >>> 'Print'



EPILOG CONTROL PANEL

1. Make sure you can see your own file name next to “**Job:**”
2. If the data light is on, the file may still be loading
3. Make sure ‘**Job**’ is selected
4. The cut time can be seen underneath the file name.
5. Press ‘**Go**’



**IF THE LASER DOES NOT CUT
THROUGH:**

1. DO NOT MOVE THE MATERIAL

2. PRESS PLAY AGAIN