

**READ ME
TO PRINT**

PREPARING YOUR FILE (ILLUSTRATOR)

1. Make sure your color mode is set to **RGB**
(File > Document Color Mode > RGB Color)

2. Set 'Stroke Color' to the correct settings
(0, 0, 255 - Blue)
(255, 0, 0 - Red)
(0, 0, 0 - Black)

3. Set 'Stroke Weight' to '0.001pt'

4. Set 'Brush Definition' to 'Basic'

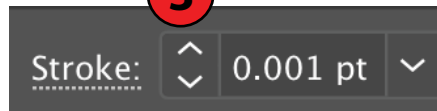
5. Set 'Variable Width Profile' to 'Uniform'

6. If you have text in the file, select it, select **Type > Create Outlines**

2



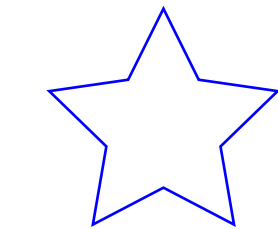
3



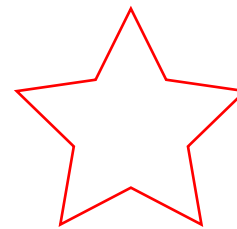
5



4



Vector Cutting



Vector Engraving



Raster Engraving

"Lorem ipsum"

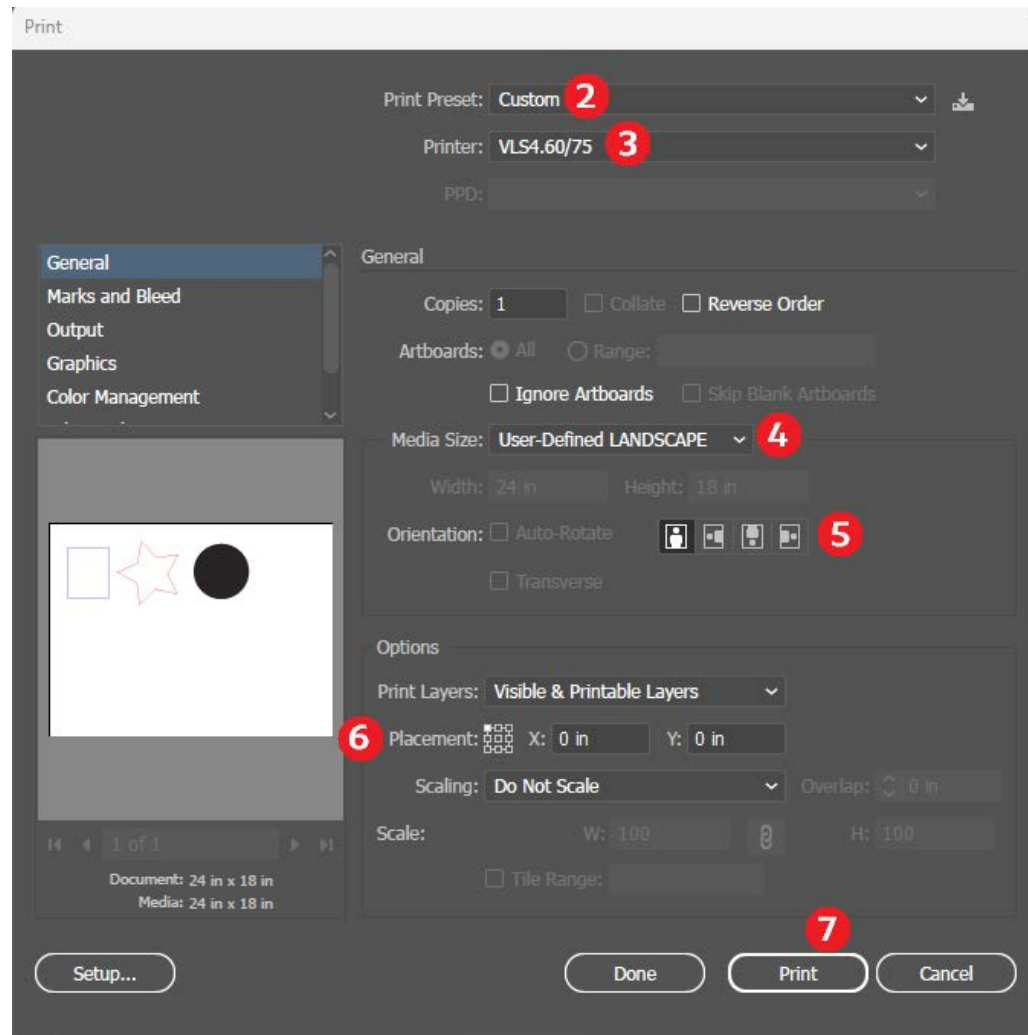
6



Create Outlines

SENDING TO THE PRINTER (ILLUSTRATOR)

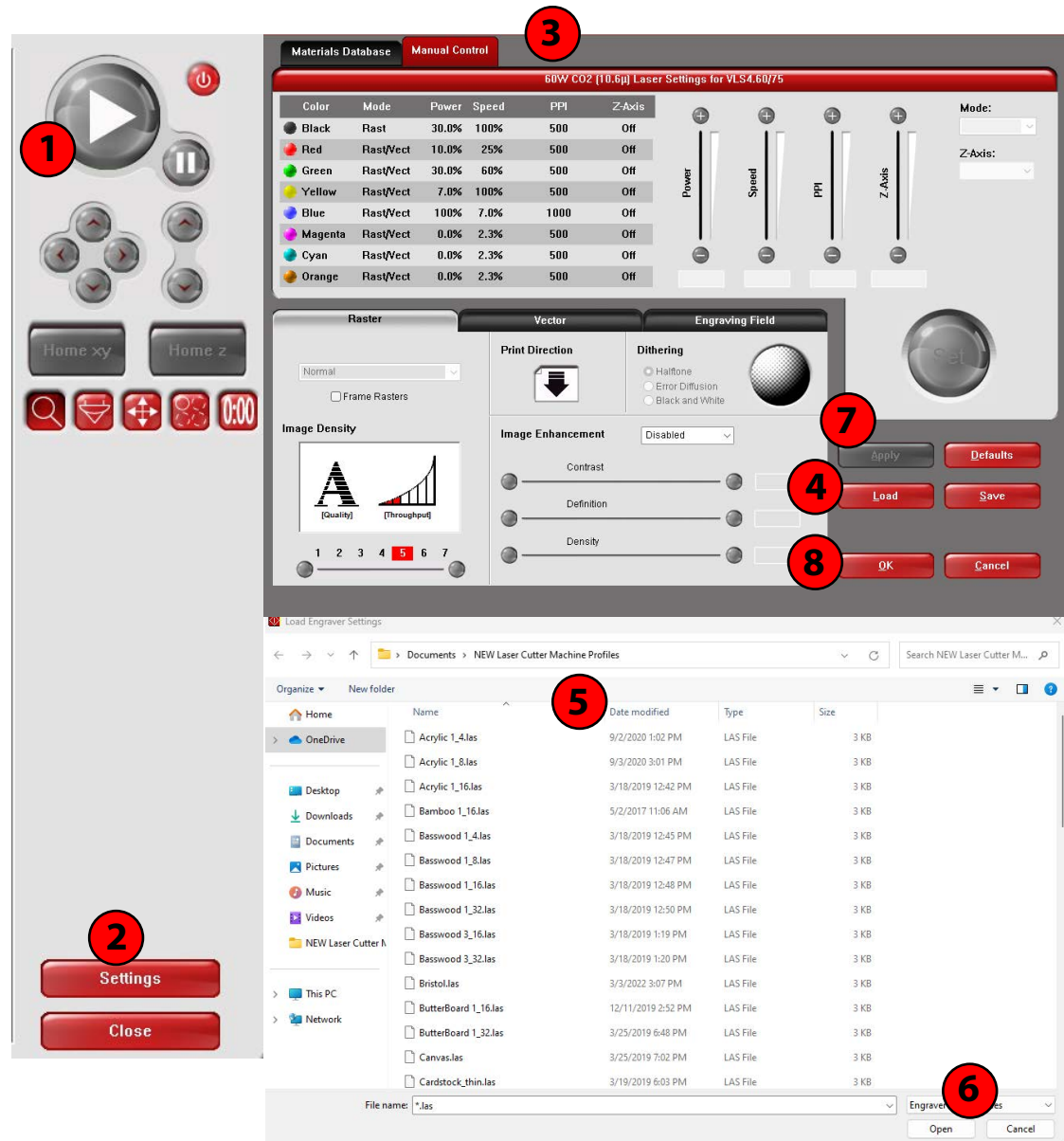
1. Go to 'File > Print'
2. Set Print Preset to 'Custom'
3. Set Printer to 'VLS4.60/75'
4. Set Media Size to 'User-Defined LANDSCAPE'
5. Choose your Orientation
6. Set the **Placement** to the **Top Left Corner**
Make sure X and Y are at 0 in
7. Press 'Print'
8. Open 'UCP' by clicking on the icon located on the desktop or the bottom right corner of the screen



CHOOSING MATERIAL SETTINGS

1. Turn on the power
2. Select 'Settings'
3. Select 'Manual Control'
4. Select 'Load'
5. Select material and thickness that best suits your project.
6. Select 'Open'
7. Select 'Apply'
8. Select 'OK'

Note: If you think you need to change power or speed settings, please **speak to a Tech**



SETTING UP THE MACHINE

1. Turn on the compressor

2. **Remove** any extra paper/coating on your material

3. Place your material on the bed

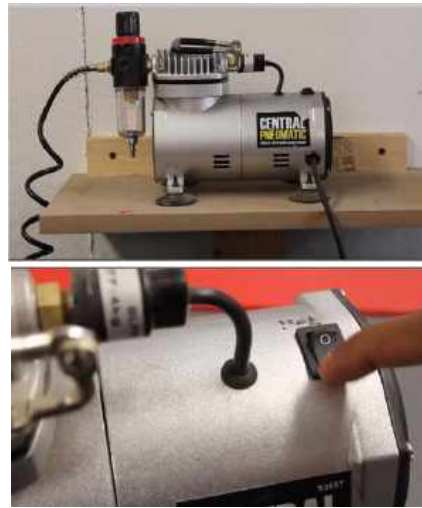
4. Open UCP - Click on "Focus View" - Click on anywhere on your design. This will allow the laser head to travel to the designated spot on the bed.

5. Pick up the **Focus Tool**; it is placed in the holder next to the machine. Use **Z button** to adjust the bed height so the Focus Tool sits comfortably between the material and the laser head (as the image shows)

6. Place the Focus Tool back to the holder

7. Click "Play" to start cutting!

1



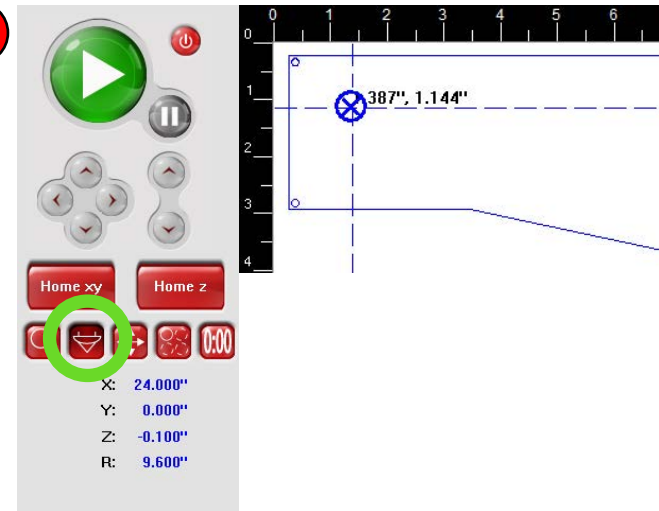
2



6



4



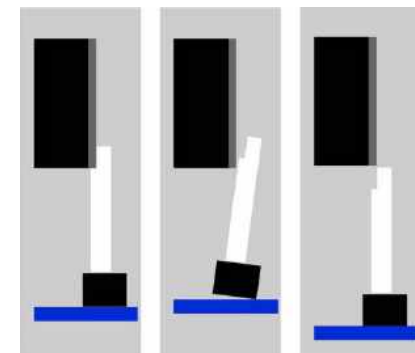
5



Focus Tool



Z button



Correct

Too close

Too far

PRINTER CONTROL PANEL

Play Button

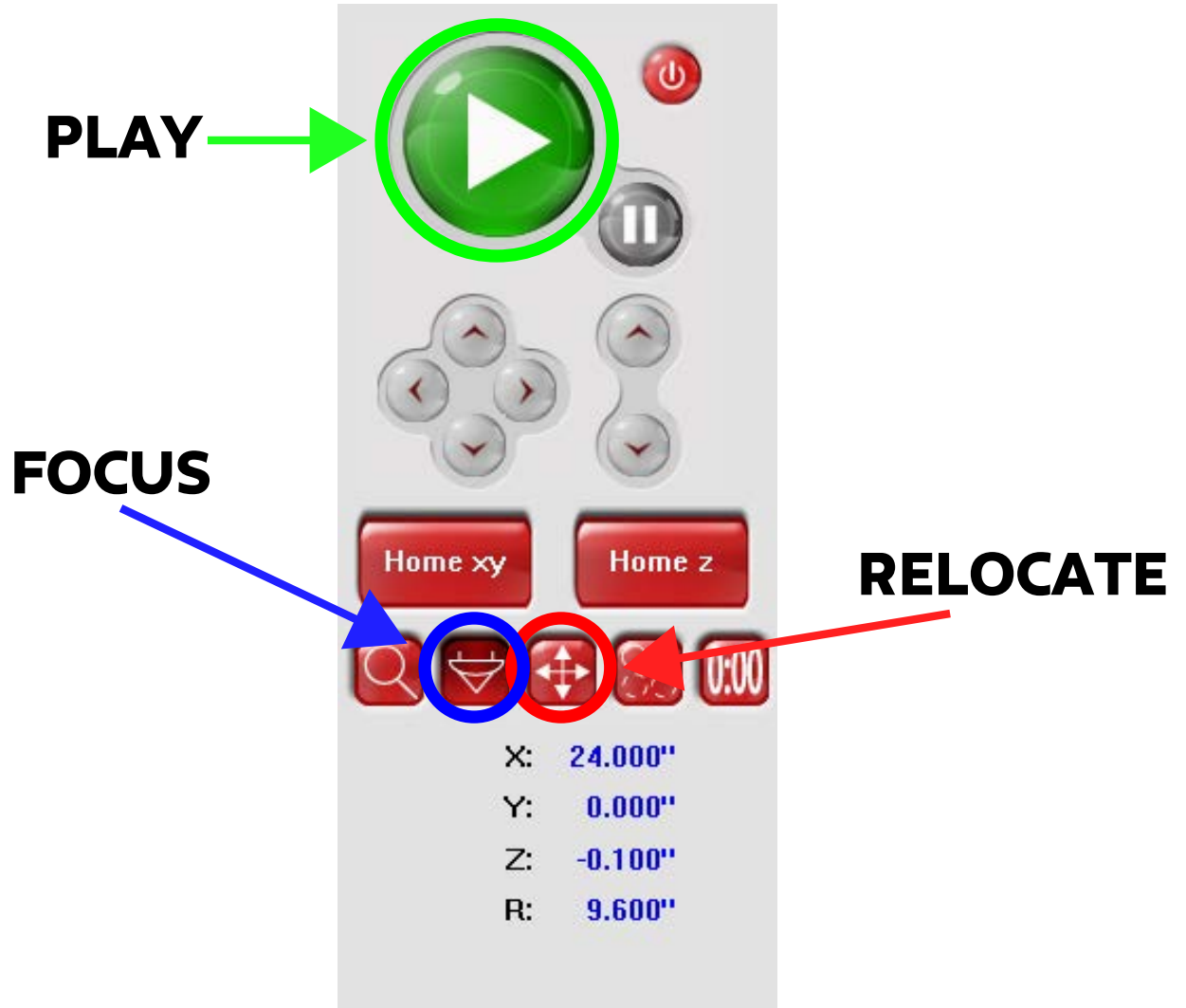
- Run the machine

Focus Button

- Moves the laser head manually

Relocate Button

- Move the design manually




FREQUENTLY ASKED QUESTIONS

Q: How do I know if the laser has cut through my material?

A: Try to lift the cut out parts with some tape so as to not move the material. If it hasn't, DO NOT move the material and press **play** again.

Q: My lines in Illustrator won't stay 0,0,255 Blue (they stay a different kind of blue, or stay black)?

A: Make sure your Document Color Mode (File > Document Color Mode) is 'RGB Color'. If it is and it's still not working, have your lines selected, go to Window > Color, select the drop-down menu icon  on the Color Panel, select 'RGB'.

Q: Can I raster engrave in grayscale?

A: Yes. The black (0,0,0) parts of your grayscale image will raster at full power, anything in the grayscale will raster with power according to how close to black it is.



no power  full power engraving

Q: Some of my lines aren't appearing on the Laser Control software.

A: Speak to a tech. Filters, Clipping Masks, Opacity settings and other file adjustments can cause artwork to disappear on the laser control software. Otherwise, someone might have just 'Skipped' that line color while previously using that computer.

Q: How do I manually change speed and power settings, or skip a color?

A: While choosing your material settings, after you have chosen a material and thickness but before you have pressed 'Apply' and 'OK', select the color you want to change or skip, change power/speed settings or select 'Skip' from the 'Mode:' drop-down menu, select 'Set', select 'Apply', select 'OK'.

**IF THE LASER DOES NOT CUT
THROUGH:**

1. DO NOT MOVE THE MATERIAL

2. PRESS PLAY AGAIN