

**THE NEW SCHOOL**

**MAKING CENTER**  
**3D SCANNING GUIDE**

## WHAT ARE YOU SCANNING?

### SMALL OBJECTS



USE EINSCAN-SP WITH TURNTABLE

REQUIRES TECHNICIAN  
CONSULTATION IN 3D LAB

## WHAT ARE YOU SCANNING?

MEDIUM SIZED OBJECTS  
& PEOPLE



USE EINSCAN-H  
HANDHELD SCANNER

REQUIRES TECHNICIAN  
CONSULTATION IN 3D LAB

## WHAT ARE YOU SCANNING?

LARGE OBJECTS  
& ENVIRONMENTS



USE IPAD PRO / IPHONE PRO  
WITH POLYCAM APP  
OR  
IPAD WITH STRUCTURE SCANNER

IPADS ARE AVAILABLE FOR LOAN FROM  
E.R.C. - BASEMENT, 2 W 13TH ST.

## DIFFICULT TO SCAN



**LONG FUZZY / FRIZZY HAIR**



**HIGH CONTRAST PATTERNS**



**FULLY REFLECTIVE / SHINY METAL  
CLEAR/TRANSPARENT**

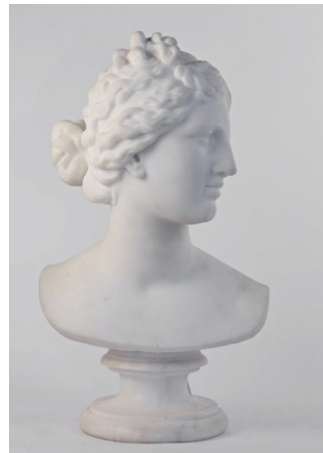


**PERFECTLY SYMMETRICAL/  
TOO FEW FEATURES**

## **IDEAL FOR SCANNING**



**GROOMED HAIR / NO HAIR**



**LOTS OF FEATURES / ASYMMETRICAL  
MATTE SURFACE / LIGHT COLORS**



**FABRIC / DRAPERY**